

# TITLE X'S ROLE Hawaii

National  
**Family Planning**  
& Reproductive Health Association

The Title X ("ten") family planning program is critical to providing and maintaining access to family planning services for people with low and no incomes and people who are un- or under-insured. This mission has been threatened by years of insufficient funding and politically motivated attacks, leaving millions without access to federally supported services.

## 2023 GRANTEES

**\$2,100,000**

Essential Access Health

## TITLE X PATIENTS 2022

### INCOME LEVEL

**32%**

CARE AT NO COST  
(BELOW 101% FPL)

**11%**

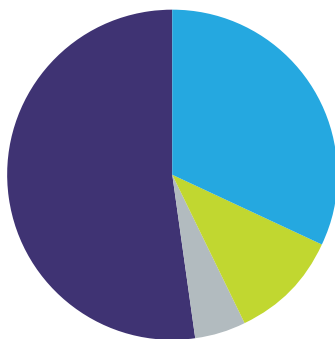
DISCOUNTED FEE  
(101-250% FPL)

**5%**

FULL FEE  
(MORE THAN 250% OF FPL)

**52%**

UNKNOWN



Income is listed relative to the federal poverty level (FPL). In 2022, the FPL for Hawaii was \$15,630.

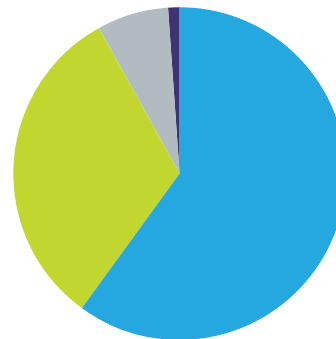
### INSURANCE STATUS

**60%**  
PUBLIC

**32%**  
PRIVATE

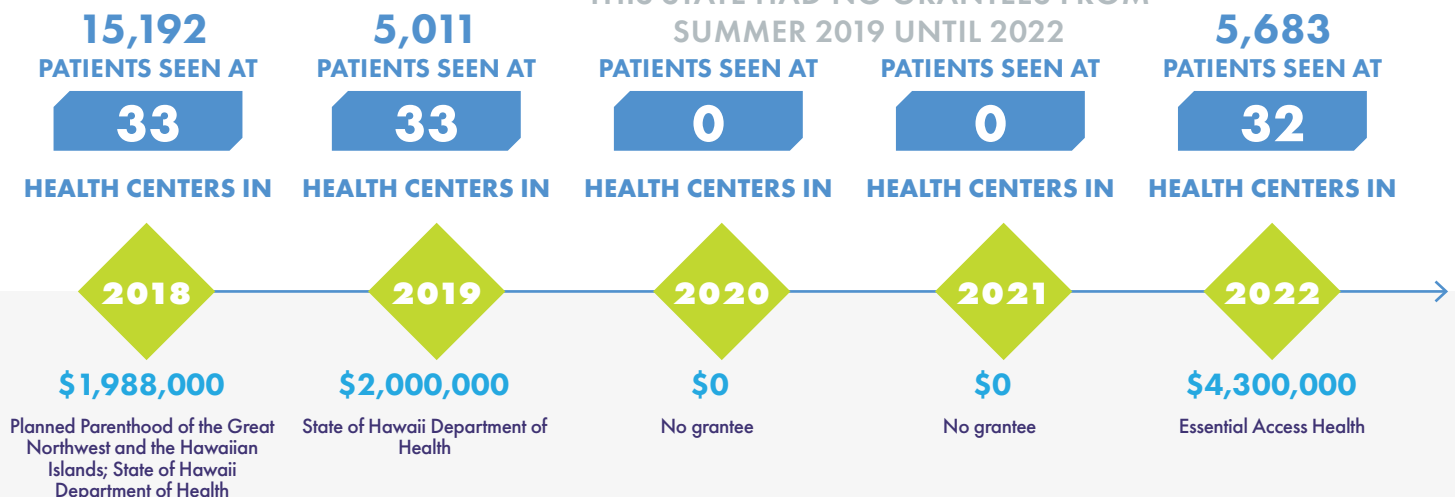
**7%**  
UNINSURED

**1%**  
UNKNOWN



## FIVE-YEAR LOOK BACK<sup>1,2</sup>

THIS STATE HAD NO GRANTEES FROM  
SUMMER 2019 UNTIL 2022



## STATE FACTS



4%

PEOPLE WITHOUT HEALTH INSURANCE, 2022



14,290

WOMEN AGES 15-49 WITHOUT HEALTH INSURANCE, 2022



100,655

WOMEN AGES 15-49 WITH INCOMES AT OR BELOW 250% FPL, 2022



24\* WEEKS<sup>3</sup>

LEGAL CUT-OFF FOR ABORTION, NOVEMBER 2023

## CASES DIAGNOSED

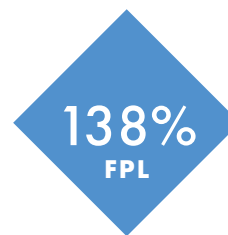
STATEWIDE, PER 100,000 PEOPLE

	2017		2021
Chlamydia	480	↓	422
Gonorrhea	95	↑	101
Syphilis	12	↑	45
Congenital Syphilis	17.1	↑	128
HIV	6	↓	5

## MEDICAID ELIGIBILITY CUT-OFFS, 2023

FULL-BENEFIT MEDICAID FOR CHILDLESS ADULTS

FAMILY PLANNING-ONLY ELIGIBILITY



In 2023, the FPL for Hawaii was \$16,770 for an individual.

N/A indicates that the state does not have a separate family planning-only program for individuals with incomes above the Medicaid full benefit cut-off.

<sup>1</sup> The grantees list includes any grantee that was awarded funds in that year. Additional organizations may have had funds for a grant that ended partway through the year.

<sup>2</sup> This count includes any service site that participated for any portion of the year.

<sup>3</sup> 24\* indicates that state law bars abortion after fetal viability, which providers may determine on an individual basis, so the deadline may be later. Abortions may also be permitted in certain circumstances after viability. However, in certain states with this cut-off there are not clinics that offer care to the legal limit.