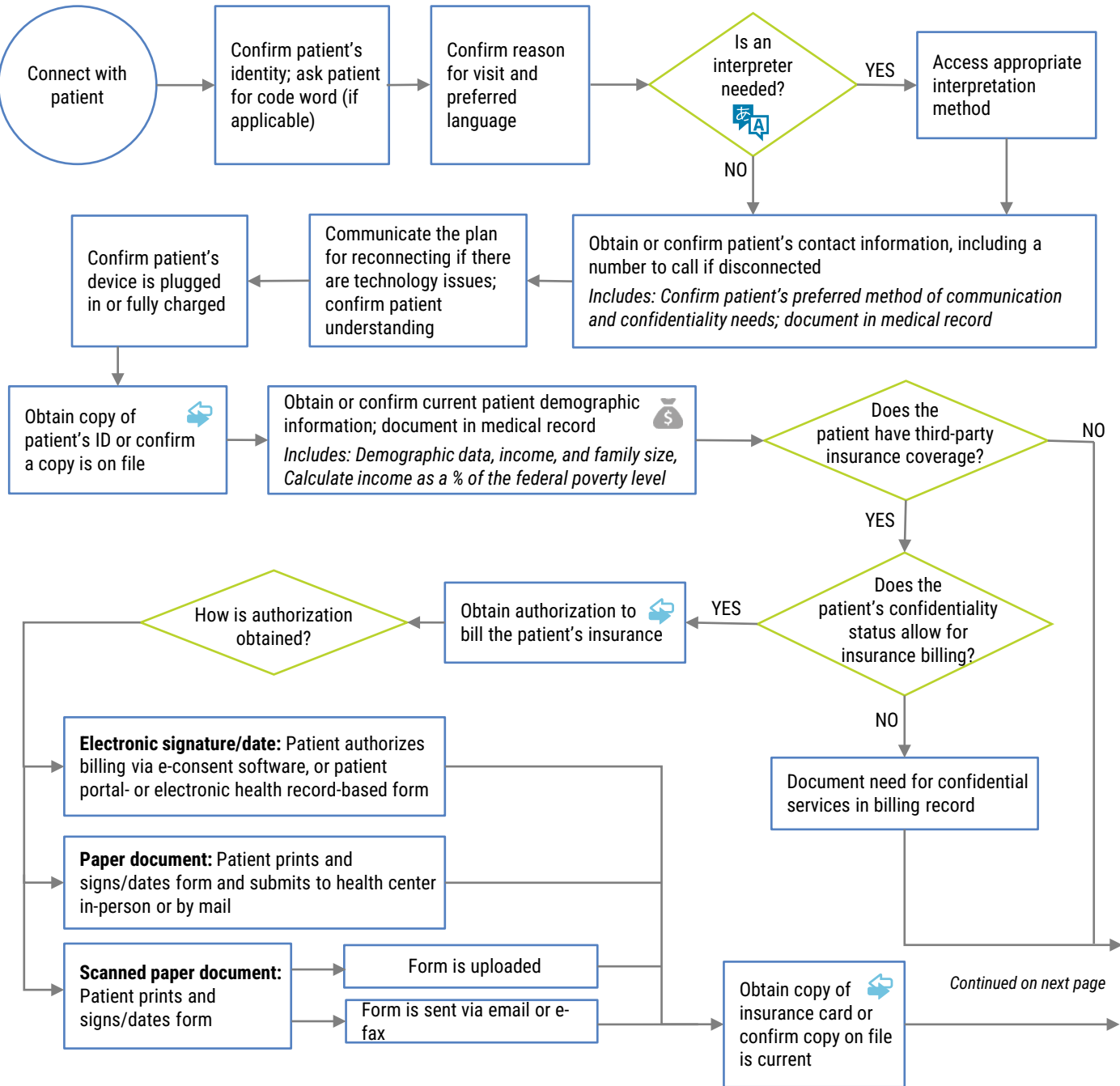


“Patient Work Up” refers to the collection of a patient’s administrative information and medical history. These steps may take place at a scheduled time in advance of or immediately prior to the patient’s visit with the clinician. Users should customize this workflow based on their health center’s staffing, as well as funding requirements.



See Workflow 3 – Connecting to Interpretation Services for steps

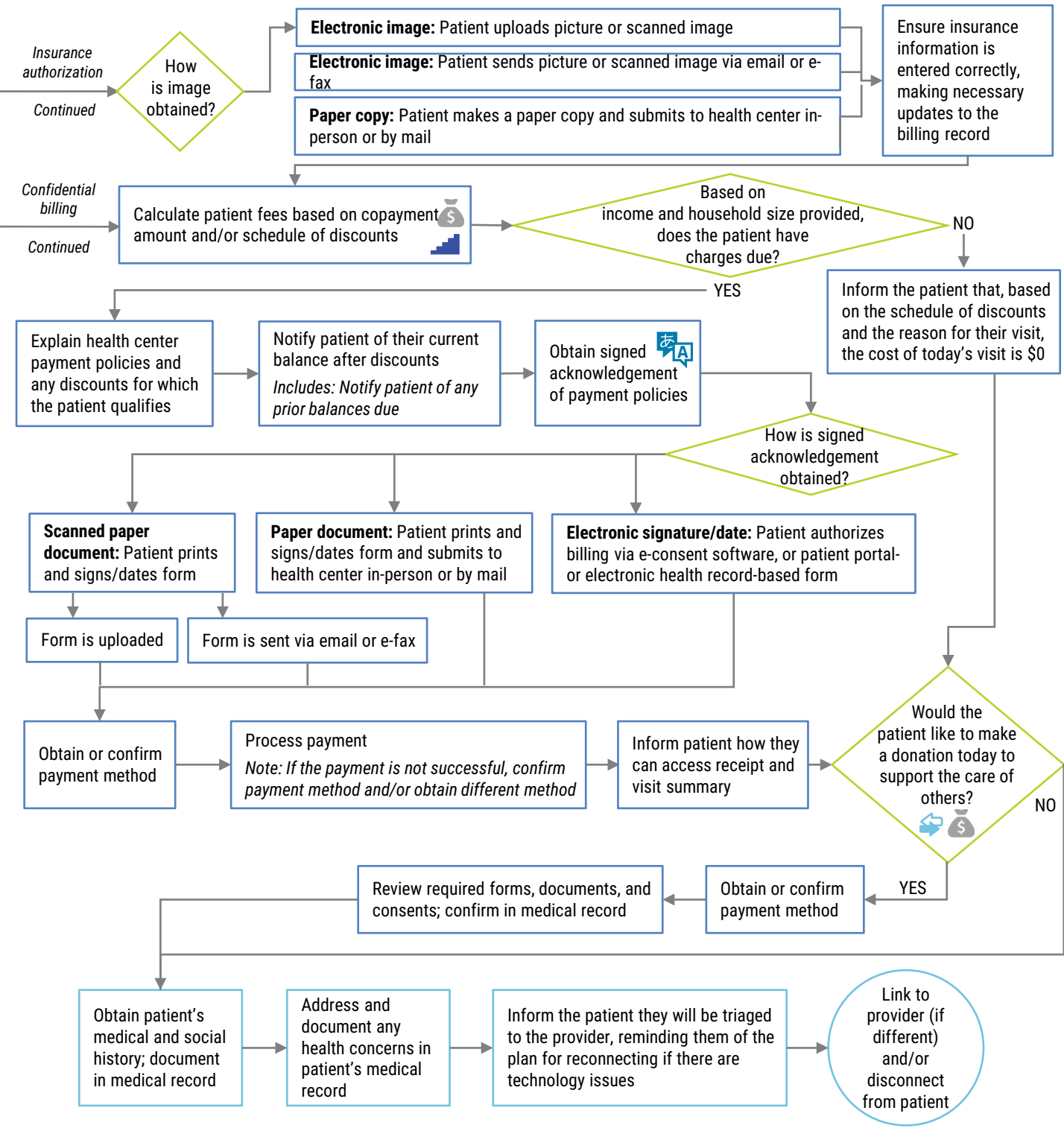
Step involves the transmission of digital images and/or forms over the telehealth network

Step necessary for some funding programs (e.g., Title X, state family planning programs)

Because fees typically are based on services provided during the visit, this step may take place at the end of the visit

# SAMPLE WORKFLOW 2

## Patient Work Up



See Workflow 3 – Connecting to Interpretation Services for steps

Step involves the transmission of digital images and/or forms over the telehealth network

Step necessary for some funding programs (e.g., Title X, state family planning programs)

Because fees typically are based on services provided during the visit, this step may take place at the end of the visit