

## TITLE X'S ROLE

# California

National  
**Family Planning**  
& Reproductive Health Association

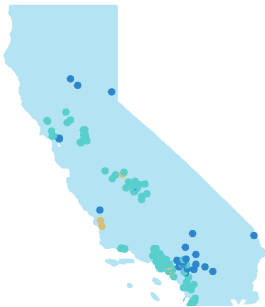
Across the country, the diverse network of health centers supported by Title X (ten) provides a range of essential family planning and sexual health services to patients who might otherwise go without care. This mission has been threatened by the devastating 2019 Title X final rule, which puts patients' access to high-quality care at risk.

## CURRENT GRANTEES

\$21,000,000 • Essential Access Health  
\$1,700,000 • The Obria Group

## TITLE X AFTER RULE

2019



7 197 27 0 0

### LEGEND

- FAMILY PLANNING HEALTH CENTER
- FEDERALLY QUALIFIED HEALTH CENTER (FQHC)
- HEALTH DEPARTMENT
- HOSPITAL
- PLANNED PARENTHOOD

The above map reflects the network for Essential Access Health. The Obria Group operates crisis pregnancy centers that provide limited services. As such, its network is not included.

## STATE FACTS 2018



42%

BIRTHS FUNDED BY MEDICAID



843,331

UNINSURED WOMEN OF REPRODUCTIVE AGE



3,367,000

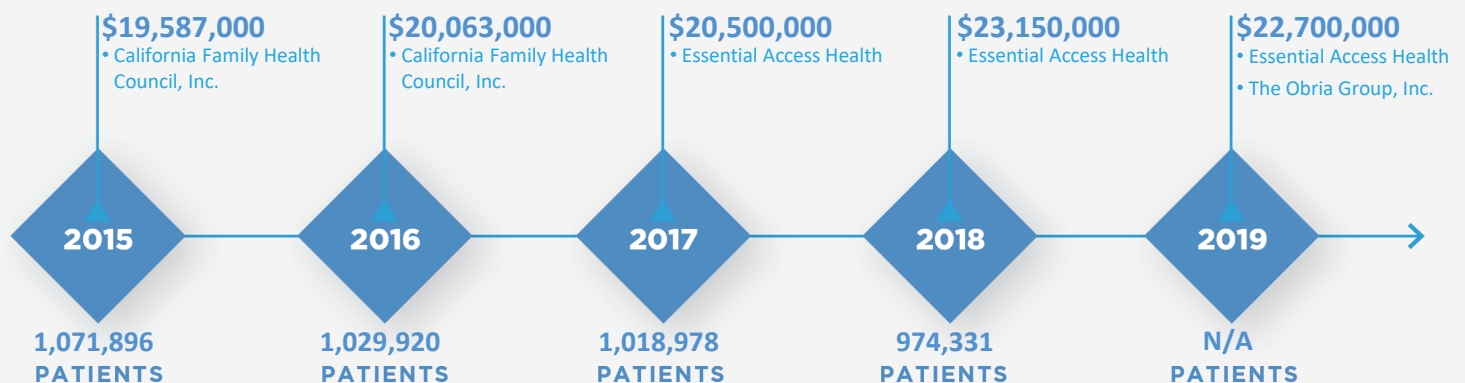
WOMEN OF REPRODUCTIVE AGE WITH HOUSEHOLD INCOMES AT/BELOW 250% FPL



200% FPL

MEDICAID ELIGIBILITY FOR ADULTS FOR FAMILY PLANNING SERVICES

## GRANTEES FIVE-YEAR LOOK BACK



# California

## CASES DIAGNOSED STATEWIDE

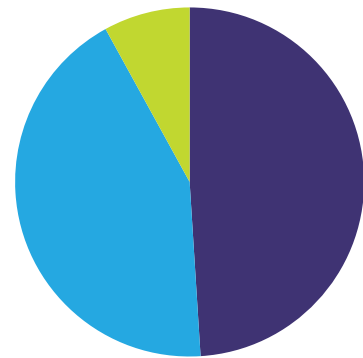
4,402 HIV

231,415 Chlamydia

79,192 Gonorrhea

7,607 Syphilis

## TITLE X PATIENTS BY INSURANCE STATUS



## TITLE X PATIENTS BY SEX

Office of Population of Affairs only collects binary sex data.



849,690  
FEMALE



124,641  
MALE

49% UNINSURED    43% PUBLIC    8% PRIVATE    0% UNKNOWN

## TITLE X PATIENTS BY INCOME LEVEL

RELATIVE TO THE FEDERAL POVERTY LEVEL (FPL)



CARE AT NO COST

71%

BELOW 101% OF FPL  
Less than \$12,060 for an individual

DISCOUNTED CARE

22%

101%-250% FPL  
\$12,060 - \$30,150

FULL PRICE CARE

4%

MORE THAN 250% OF FPL  
More than \$30,150

4%

INCOME UNKNOWN