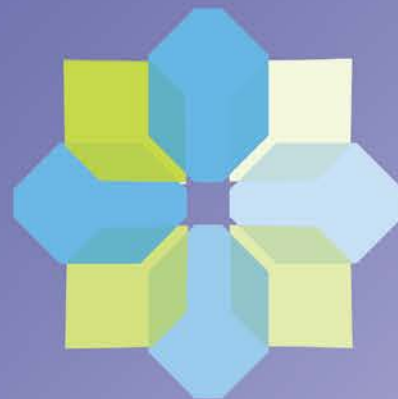




# WELCOME!

CLARE COLEMAN  
PRESIDENT & CEO



**2020 NFPRHA**  
**NATIONAL CONFERENCE**

# Thanks to Our Sponsors



Medicines<sup>®</sup>  
**360** ♀

**HOLOGIC<sup>®</sup>**  
The Science of Sure

# Thanks to Our Exhibitors





12:43



☰ 2020 NFPRHA National Conference

NFPRHA  
**50<sup>TH</sup>**  
TITLE X

NFPRHA Annual Reception  
March 10  
6:30 p.m. - 8:30 p.m.  
**RSVP Today**



Schedule



Speakers



Sponsors



Exhibitors



Registration



Attendees



Annual  
Reception



Activity Feed



WiFi



Weather



Maps



Coronavirus and  
Spread of Illne...



Continuing  
Education



DC  
Recommendati...



NFPRHA  
Website Survey



FAQ's



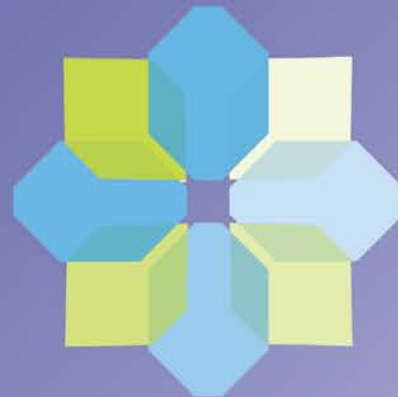
Search



# MEMBERSHIP MEETING

LIZ ROMER  
BOARD CHAIR

CLARE COLEMAN  
PRESIDENT & CEO



**2020 NFPRHA**  
**NATIONAL CONFERENCE**



# Thank You to Our Term-Limited Board Member

- **Laura Meyers**  
Planned Parenthood of  
Metropolitan Washington, DC

# Board Appointments & Membership Election

## 2<sup>ND</sup> TERM

- **Taisha Garcia**  
Family Health Council of  
Central Pennsylvania
- **George Hill**  
Maine Family Planning
- **Patricio Gonzales**  
Access Esperanza Clinics (TX)
- **Heather Maisen**  
Public Health — Seattle & King  
County (WA)
- **Carlina Hansen**  
California Health Care Foundation

# Board Appointments & Membership Election

## 1<sup>ST</sup> TERM

- **Marilyn Johnson**  
Mississippi Department of Health
- **Cora Rabenberg**  
North Dakota Department of Health
- **Michelle Trupiano**  
Missouri Family Health Council



# NFPRHA MEMBERS BY THE NUMBERS

## Organizations:

36 Health Systems

22 Org Premier

814 Subrecipients

44 Org Basic

32 Org Limited

## Individuals:

31 FP Professionals

20 FP Advocates

## Partner

organizations:

16 FP Partners

# TRAVEL ASSISTANCE FOR MEMBERS

**FY 2020**

(current fiscal year)

**\$140,609 & counting**

**262 individuals, 3 meetings**

**FY 2019**

**\$153,027**

**182 individuals, 2 meetings**

**FY 2018**

**\$204,294**

**261 individuals, 3 meetings**

# FINANCES OVER THE LAST 3 YEARS

FISCAL YEAR	Total Expenses	Change in Net Assets
2019	\$8,892,164	+ \$617,690
2018	\$6,948,782	+ \$276,005
2017	\$4,841,203	+ \$366,132

# SOURCES OF SUPPORT

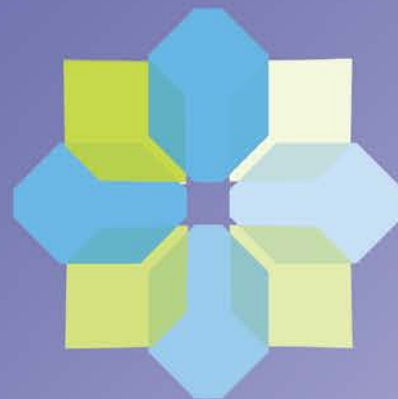
	Actual 2019	Actual 2018	Actual 2017
Grants & Contributions	53.3%	67.7%	84.9%
Membership	3.5%	3.9%	5.3%
National Conference	2.4%	3.9%	5%
Corporate	0.4%	0.3%	0.6%
Investments	0.5%	0.3%	-0.3%
In-Kind Contributions	39%	21.9%	3.8%
Miscellaneous	0.9%	2%	0.7%



# MEMBERSHIP MEETING

LIZ ROMER  
BOARD CHAIR

CLARE COLEMAN  
PRESIDENT & CEO



**2020 NFPRHA**  
**NATIONAL CONFERENCE**

# Operations



**Joe Zillo**  
Chief Operating Officer



**India Gorden**  
Manager, Finance &  
Office Operations



**Olivia Harrison**  
Director, Membership



**Victoria Marsh**  
Manager, Events



**Lisa Phillips**  
Director, Finance

# EXECUTIVE OFFICE



**Clare Coleman**  
President & CEO

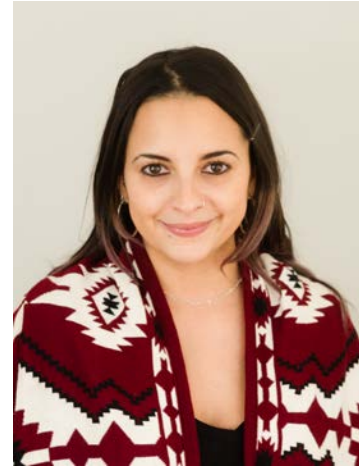


**Illysa Schrager**  
Director, Executive Office

# DEVELOPMENT



**Elizabeth Franzino**  
Senior Director, Development



**Claudia Arango**  
Manager, Development, Foundation Relations

# SERVICE DELIVERY IMPROVEMENT



**Daryn Eikner**  
Vice President



**Elizabeth Jones**  
Director



**Amanda Kimber**  
Senior Director



**Callie Wise**  
Director

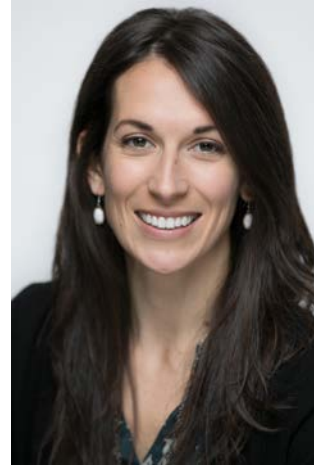
# ADVOCACY & COMMUNICATIONS



**Jessica Marcella**  
Vice President



**Mindy McGrath**  
Senior Director



**Audrey Sandusky**  
Senior Director



**Naomi Slack**  
Associate



**Lauren Weiss**  
Director

# HEALTH CARE STRATEGY & ANALYSIS



**Robin Summers**  
Vice President and Senior Counsel



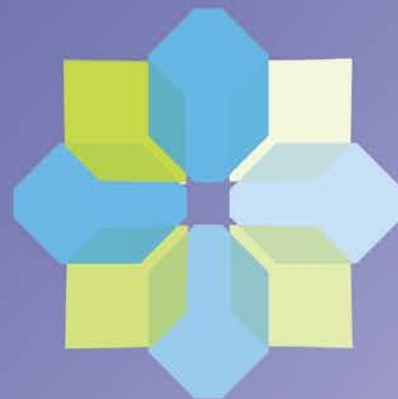
**Kelsey Grimes**  
Legal Fellow



# MEMBERSHIP MEETING

LIZ ROMER  
BOARD CHAIR

CLARE COLEMAN  
PRESIDENT & CEO



**2020 NFPRHA**  
**NATIONAL CONFERENCE**

# Questions?

---

IN MEMORIAM

---



# Karen Edlund

NFPRHA Board Member  
Massachusetts Department of Public Health



Andrea Fischer  
Arizona Family Health Partnership



# Rian Frachele

NFPRHA Board Member  
Planned Parenthood Columbia Willamette  
Oregon Health Authority



# Robert Hudson

Butler County Health Department, Missouri



# Bill White

NFPRHA Board Member

Pine Street Partners

U.S. Department of Health and Human Services

---

IN MEMORIAM

---



“WHAT THE  
(REPRODUCTIVE)  
HEALTH,”  
A CONVERSATION  
WITH JULIE ROVNER



**2020 NFPRHA**  
**NATIONAL CONFERENCE**